







LEE COUNTY CONSERVATION

Parks, Facilities, & Primary Amenities

	Cabins		Hunting Allowed		Picnic Area		Biking Trails
	Camping		Boat Ramp		Shelters		Hiking Trails
	Fishing		Paddling		Swimming		Wildlife Viewing

1) Augusta Access
3300 Old Quarry Rd
Wever, IA 52658



2) Indian Path Park
1899 U.S. Hwy. 61
Wever, IA 52658



3) Skunk River Access
1700 400th Ave
Wever, IA 52658



4) Burk's Run Wildlife Area
3455 180th St
Wever, IA 52658



5) Green Bay Access
2112 Green Bay Rd
Wever, IA 52658



6) Denning Conservation Area
1640 130th St
Donnellson, IA 52625



7) LaCrew Roadside Rest Area
1600 160th St
Donnellson, IA 52625



8) Pollmiller Park
2448 County Rd 103
West Point, IA 52656



9) Wilson Lake
2195 220th St
Donnellson, IA 52625



10) Croton Civil War Park
1134 Croton Rd
Farmington, IA 52626



11) Turkey Run Wildlife Area
2787 Belfast Rd
Farmington, IA 52626



12) Turkey Run Access
2826 Belfast Rd
Farmington, IA 52626



13) Sugar Creek Bottoms
1700 255th St
Argyle, IA 52619



14) Charleston Park
2546 198th Ave
Donnellson, IA 52625



15) Heron Bend Fishing Area
2392 US-61
Fort Madison, IA 52627



16) Ortho Access
2438 Ortho Way
Fort Madison, IA 52627



17) Devil's Creek Access
2496 263rd Ave
Fort Madison, IA 52627



18) North Heron Bend
2478 263rd Ave
Fort Madison, IA 52627



19) North Winds Conservation Area
2498 265th Ave
Fort Madison, IA 52627



20) Trumpeter Marsh
2513 Henry Ladyn Dr
Montrose, IA 52639



21) Lee County Conservation Center
22) Heron Bend
23) Reuther Refuge
2652 US-61
Montrose, IA 52639



24) Lotus Flats Conservation Area
2900 Mississippi River Rd (in the river)
Montrose, IA 52639



25) Linger Longer Rest Area
2900 Mississippi River Rd
Montrose, IA 52639



26) Galland School
3160 Mississippi River Rd
Montrose, IA 52639



27) Amborn-Pagin Wildlife Area
2020 340th St
Argyle, IA 52619



28) Chatfield Park
3592 Iowa Rd
Keokuk, IA 52632

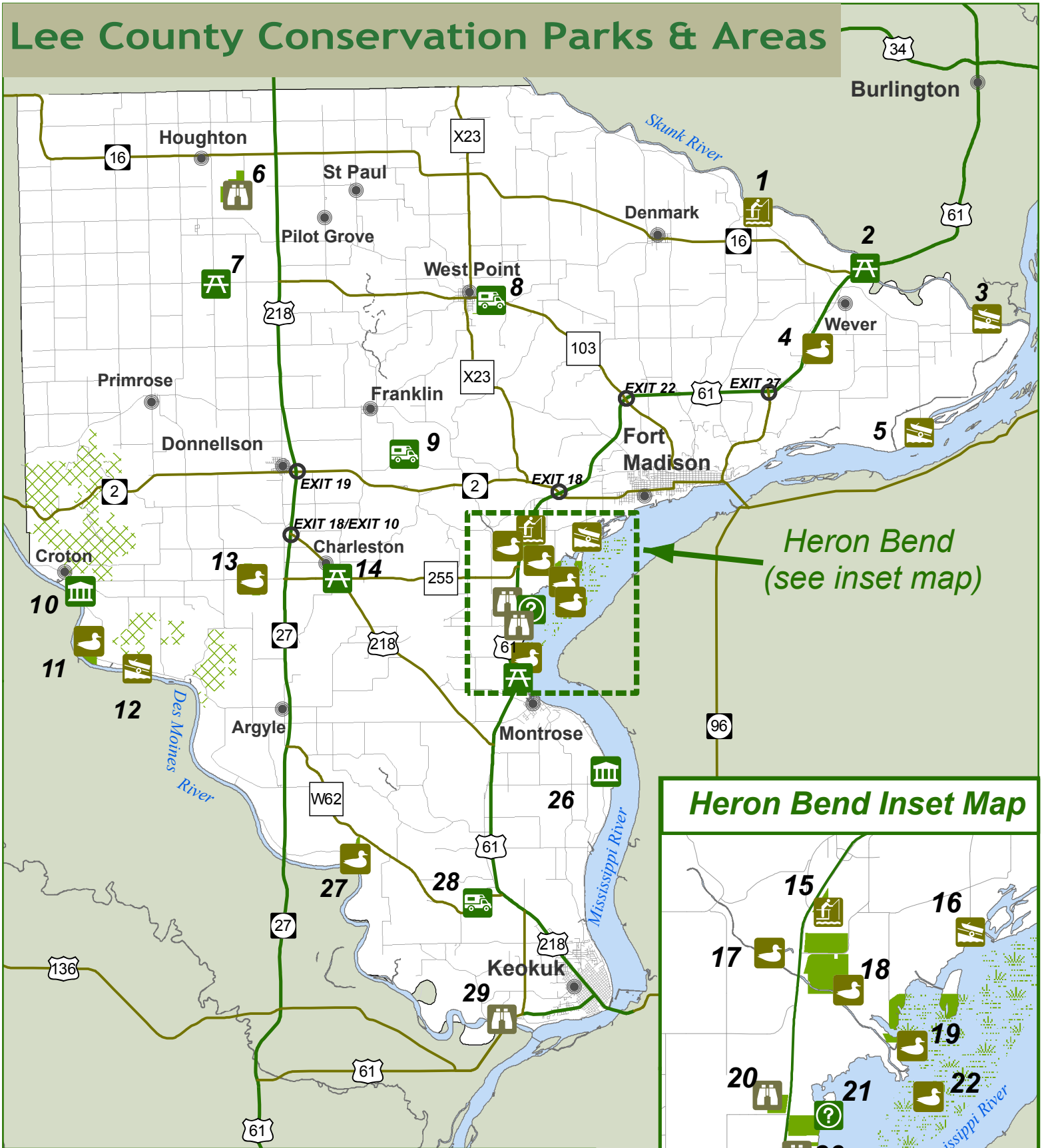


29) Redwing Area
3941 Valley Rd
Keokuk, IA 52632



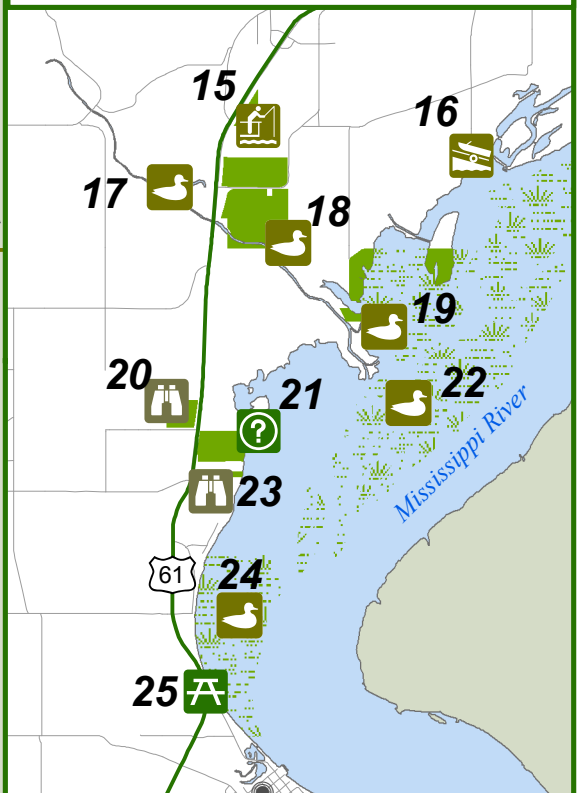
For more information or for other activities allowed, call 319.463.7673,
visit <https://www.mycountyparks.com/county/lee>,
or stop in at the Lee County Conservation Center.

Lee County Conservation Parks & Areas



Heron Bend
(see inset map)

Heron Bend Inset Map



Legend & Primary Park Activities

- | | | |
|---------------------|-----------------|---------------------|
| Conservation Center | Hunting Area | Two Lane Highway |
| Small County Park | Nature Preserve | Four Lane Highway |
| Large County Park | Fishing Area | Shimek State Forest |
| Historic Site | Boat Access | Lee County, Iowa |
- 0 1.25 2.5 5 Miles